

# What's On in March?



## *Do you have an email address?*

To produce a hard copy of 'what's on' we are using the equivalent of 3 trees per month so if you have internet access and are still receiving 'what's on' in the post, please forward your email details to [cw@cma.nsw.gov.au](mailto:cw@cma.nsw.gov.au)

## *Mudgee Area Vegetation Incentive Program Gathering*

**When:** 4<sup>th</sup> March 2008

**What:** For anyone interested in fencing out native vegetation or creeks, mark the date of the 4<sup>th</sup> of March 2008 for a meeting at the Mudgee Vineyard Motor Inn. In the morning we will have a get together with some guest speakers. After a BBQ lunch, we will board the bus to visit 2 local property owners who have been managing areas on their property for conservation. Out in the field, practitioners will run us through methods in conservation management including fencing, revegetation and stock water access points. We will return to the vineyard at 4:30pm.

**Where:** Mudgee Vineyard Motor Inn

**Further Info:** Watch this space for further Vegetation Incentive Program gatherings in your local area. For more information or detailed agenda contact Nicolai Cooper, Andrew Knop or Robyn Bartus on 02 6881 3400.

## *Reducing Weed Impacts on Biodiversity*

**What:** A new project involving NSW DPI and the Department of Environment and Climate Change (DECC) is focussed on assisting Catchment Management Authorities (CMAs) to develop priorities for weed control to protect biodiversity. Dr. Bruce Auld, a plant ecologist, will be working with Central West CMA to prioritise weeds and biodiversity under threat in the catchment with workshops in April 2008. The aim is to determine the widespread invasive plant species that are impacting on biodiversity, particularly, native plant communities, and nominating communities

and sites for on ground work. This will be used to guide investment by CMA for on-ground projects. In advance of the workshops Bruce is preparing a draft list of widespread, invasive plant species, lists of threatened species, endangered ecological communities, national parks and nature reserves and any other relevant information for the catchment.

**When/Where:** Orange: 1 April 10am to 3:30pm  
West Room, Orange Regional Gallery, Civic Square, Byng St  
Dubbo: 3 April 10am to 3:30pm  
Western Plains Cultural Centre, 76 Wingewarra St.

**Further Info:** For further information and to register for the workshops contact Bruce by email: [bruce.auld@dpi.nsw.gov.au](mailto:bruce.auld@dpi.nsw.gov.au)

See the project website:

[http://www.nationalparks.nsw.gov.au/npws.nsf/Content/regional\\_weedmgmt\\_priorities](http://www.nationalparks.nsw.gov.au/npws.nsf/Content/regional_weedmgmt_priorities)

## *Paddock Plants Day*

**When:** Monday the 17<sup>th</sup> March - 9 am

**What:** Paddock Plants Days are designed to give people an appreciation for plants that grow in their own back yard or paddock. People learn how to identify their plants and how best to manage them.

**What is provided:** Booklet of information and a sausage sizzle

**Where:** On a property called "Kadeema", east of Oberon

**Further Info:** Contact Adam Hook from the Central West CMA to book a spot and for a map.  
Ph: 02 63394915

## *Keyline Design Course*

**When:** 8<sup>th</sup> March

**What:** A rare opportunity to learn practical, hands-on Keyline Design with Darren Doherty, the world's most respected accredited Keyline educator. The Keyline System of farming has been one of the pillars of Sustainable farming and hydrology since the mid 1900's. A much acclaimed

technique that is rarely offered as a specific course, despite its Australian origin.  
**Where:** Milkwood Farm. 1466 Campbells Creek Rd. Carcalgong via Mudgee  
**Cost:** \$485  
**Further Info:** Contact Kirsten 02 6373 7763

## Diary Dates



**February 29<sup>th</sup> & March 1<sup>st</sup>:** WaterSmart Expo at Narromine showground.  
**Further Info:** Contact Jess Brown on 02 6881 3412

**March 2<sup>nd</sup>:** Clean Up Australia Day  
**Further Info:** visit [www.cleanup.org.au/au/](http://www.cleanup.org.au/au/)

**March 3<sup>rd</sup> - 9<sup>th</sup>:** Crossing the Divide farming Festival  
**Further Info:** Contact Sue Winter on 02 6888 7689

**March 4<sup>th</sup>:** Mudgee Area Vegetation Incentive Program Gathering  
**Further Info:** Contact Nicolai Cooper, Andrew Knop or Robyn Bartus on 02 6881 3400

**March 8<sup>th</sup>:** Keyline Design Course  
**Further Info:** Contact Kirsten on 02 6373 7763

**March 14<sup>th</sup>:** Quality Rural Solutions Property management Planning course  
**Further Info:** Contact Jane Vincent on 02 6230 3584

**March 17<sup>th</sup>:** Paddock plants Day "Kadeema" (Oberon)  
**Further Info:** Contact Adam Hook on: 02 6339 4915

**March 19<sup>th</sup>:** Reviving Raglan Creek, Creek Crawl  
**Further Info:** Contact Adam Hook on: 02 6339 4915 or Julie Kingswood on: 02 63336133

**March 19<sup>th</sup>:** Bell River Catchment Community Group Meeting  
**Further Info:** Contact Wal Whiteley on 02 6369 6257

**March 29<sup>th</sup>:** Central Tablelands Landcare Toolkit Launch  
**Further Info:** Contact Margie Crowther on 0427 425 844

**April 1<sup>st</sup> and 3<sup>rd</sup>:** Reducing Weed Impacts on Biodiversity  
**Further Info:** Contact Bruce Auld at: [bruce.auld@dpi.nsw.gov.au](mailto:bruce.auld@dpi.nsw.gov.au)

## Mosaic Mapping

Find out about projects that have been funded by the Natural Heritage Trust and the NAP. Go to :

[www.nrm.gov.au](http://www.nrm.gov.au) and have a look at the projects in the Central West

## Upcoming Stipa Wealth Project days

**When:** Tuesday 4<sup>th</sup> March  
**What:** Introduction to Grazing Management  
**Where:** Coolah

**When:** Wednesday 5<sup>th</sup> March  
**What:** Advanced Grazing Management  
**Where:** Wellington

**When:** Tuesday 11<sup>th</sup> March  
**What:** Pasture Identification and Management  
**Where:** Coolah

**When:** Thursday 13<sup>th</sup> March  
**What:** Water Supply Planning  
**Where:** Nyngan

**When:** Monday 17<sup>th</sup> and Tuesday 18<sup>th</sup> March  
**What:** Financial Planning  
**Where:** Dunedoo

**When:** Friday 28<sup>th</sup> March  
**What:** Saltbush establishment and management  
**Where:** Warren

**Cost:** Cost of these workshops is free for financial Stipa Native Grasses Association members. Cost for non-members is \$75.00 which includes one year's subscription to Stipa. Morning tea, lunch and afternoon tea will be provided at a cost of \$15.00 each per day.

**Further Info:** Contact Angela Roberts at the Stipa office on 02 6845 1044 or on 0424 228 725 or by email at [angela.stipa@bigpond.com](mailto:angela.stipa@bigpond.com)

## Call for Nominations for the Most Valuable Prize in River Restoration

Nominations for the prestigious Thies Riverprize will close on March 28<sup>th</sup>, 2008.

Internationally renowned for recognising and rewarding best practice in the restoration and management of river systems around the world, the Thies Riverprize is the most coveted award of river basin and watershed management groups.

The Thies Riverprize is now valued at AU \$500,000 and offers the highest monetary award of river management prizes, and global recognition at the annual International Riversymposium in September. All international and national finalists are invited to present their

projects at the *Riversymposium* which attracts more than 600 participants at all levels of river management in government, science, industry, environmental and community groups from over 50 countries.

There are two awards, and Australian river and catchment management groups may enter both the International Thies Riverprize and National Thies Riverprize.

Information and nomination guidelines for the 2008 International and National Thies Riverprizes can be downloaded from [www.riversymposium.com](http://www.riversymposium.com). Previous entrants are encouraged to apply again.

### **Clean Up Australia Day**

Clean up Australia Day is the nation's largest community-based environmental event. This year it is on Sunday the 2<sup>nd</sup> of March.

Clean up Australia has evolved into an organisation that works with the community, government and business to provide practical solutions to help us all live more sustainably every day of the year. For more information visit: [www.cleanup.org.au/au/](http://www.cleanup.org.au/au/)

### **Reviving Raglan Creek, Creek Crawl Event**

**When:** Wednesday the 19<sup>th</sup> March - 9 am

**What:** Bathurst Regional Council has been undergoing a large project in partnership with the Central West CMA on an important creek in the Bathurst area known as Raglan Creek. The Creek Crawl will showcase erosion control works, fencing and revegetation that has gone into the project, along with demonstrations from some of the groups involved such as Kelso High and Raglan Public school.

**What is provided:** Transport in a mini bus, information on the day as well as a BBQ proudly provided by Greening Bathurst.

**Where:** The mini bus will leave from the council chambers at 9am and return after lunch.

**Further Info:** Contact Adam Hook from the Central West CMA on: 02 63394915 or Julie Kingswood from Bathurst Regional Council on: 02 63336133.

### **Attention Central West Aboriginal Community**

**Weaving:** Every Tuesday morning from Feb 19th to March 4th Aboriginal women from Bathurst

have been enjoying learning about the traditional Aboriginal craft of making weaved articles from native fibres. Aboriginal people are encouraged to attend, **contact:** Bathurst Local Aboriginal Land Council (LALC): 02 63326835

**Safe Chemical Use course:** March 4-5th the Wellington Aboriginal community will participate in a Safe Chemical Use course facilitated by YANKO. Aboriginal people are encouraged to attend **contact:** Wellington Wirdajuri Town Common Committee: 6845 3793

**Education and Training:** the CMA is now providing educational and training opportunities for Aboriginal people living in the catchment area to learn more about Traditional and contemporary ways for managing our natural and cultural resources if you want to know more **contact:** Susanne Williams: Natural Resource Officer; Aboriginal Community Support, WELLINGTON, Ph: 68 407806

### **Crossing the Divide Farming Festival**

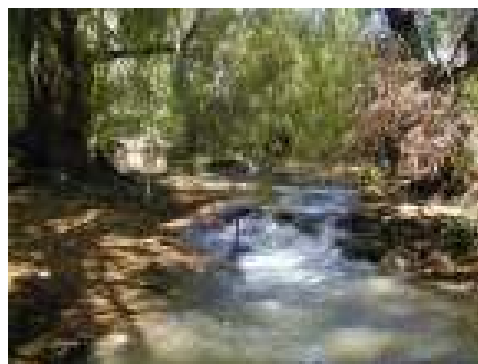
**What:** Crossing the Divide Farming Festival is a fun and educational festival to increase local knowledge of environmental issues, social unity and raise awareness between the city and country.

**When:** March 3rd-9th

**Where:** Trangie

**Who:** For more information contact Sue Winter 02 6888 7689

### **Looking After the Bell River**



**What:** The Bell River Catchment Community Group has reformed and is interested in submitting applications for funding to the Australian Government to implement priority natural resource management projects following the consultancy work and priority action statement produced by Hassell and Associates in March, 2004. The community's views on appropriate projects and possible partnership arrangements with the Central West CMA will form

part of the discussions at a community meeting. Other topics will be an update on the Central West Catchment Management Authority's targets in its catchment action plan presented by John Lawrie and an overview of a proposal to fence off a section of the Bell River and tributaries to increase biodiversity.

**Where/When:** The community meeting will be at the Wellington Golf Club, Caves Road, Wellington on Wednesday 19th March, 2008 at 7.00 pm. Dinner will be available for a cost of \$8.00.

**Contact:** RSVP by FRIDAY 14th March by contacting Wal Whiteley on: (02) 63696257 (Home number); Mobile: 0427696257, or email [whiteleyglenara@eldersnet.com.au](mailto:whiteleyglenara@eldersnet.com.au) for catering purposes.

### **Vertebrate Pest Animal Management Strategy for the Central West Catchment**

**What:** The Central West Catchment Management Authority (CMA) has contracted the NSW Department of Primary Industries (DPI) to develop a Vertebrate Pest Animal Management Strategy. This strategy will guide the CMA's future investment in managing vertebrate pest animals.

The objectives of developing this strategy are: to identify vertebrate pest animals, their impacts and where they are within the catchment. It is also to identify the most appropriate management actions to meet Catchment Action Plan targets and to engage the community in vertebrate pest animal management.

**Who/Contact:** The Project Leader for this project is Shane Adams at DPI in the Orange Agricultural Institute. For further info or to make submissions in relation to the management of vertebrate pest animals in the Central West Catchment contact Shane: Ph: (02) 6391 3891, Fax: (02) 6391 3972 Email: [shane.adams@dpi.nsw.gov.au](mailto:shane.adams@dpi.nsw.gov.au)

### **Property Management Planning**

**What:** A property planning course presented by Quality Rural Solutions - Jane Vincent & Assoc, with Natural Resource Management trainer, Alison Elvin. Whole Farm Plans are an invaluable tool for your property management, set out on maps and in words. The Plan is a record of the physical state of your property and a concrete reference point from which you can discuss, adjust and adapt your property management strategies through the seasons. The Course is subsidised 90% by Central

West CMA. The course covers eight days of workshops and takes participants through all aspects of property planning including learning how to use Concepts Rural Software to do digital mapping, planning, paddock recording, nutrient budgets, and water use efficiencies.

**When/Where:** Commencing in Bathurst on Friday, 14 March 2008 with further dates decided by participants (these may be Fridays and Saturdays), 9.30 am to 4.00 pm

**Who/Contact:** For further information contact: Quality Rural Solutions - Jane Vincent & Assoc.: Jane Vincent P: 6230 3584 F: 6230 3586 M: 0438 910679 Email: [jane@qualityruralsolutions.com.au](mailto:jane@qualityruralsolutions.com.au)

### **Launch of the "Central Tablelands Landcare Toolkit"**



**What:** Do you or someone you know, want to help the environment in your district more?

Central Tablelands Landcare has been helping people like you make more happen with projects big and small, urban and rural for the past 15 years. You are invited to Walks, talks and demonstrations to cover all types of topics that go with helping people like you to develop more ideas for your local environment.

**What the day will cover:** A screening of the CD document. The CT Toolkit is designed to help people understand their bigger backyard. It covers the geography of the district and gives great ideas on developing projects, going for funding and running a community group. Meet a range of people including the new Landcare Coordinator for the Central Tablelands and CMA staff. Learn about several Landcare projects, monitoring and evaluating projects and find out how to make things happen in your area.

**When/Where:** Stay tuned: Date and time to be confirmed. Location: "Merungie" 178 Emu Swamp Rd LUCKNOW

**Contact:** For more info contact Margie Crowther on 042 742 5844.

# Money Matters

## Central West CMA Wetland incentive Program 2008

The CWCMA has made a specific commitment to the improvement of wetlands across the catchment. The activities eligible for funding are: Stock proof fencing, Alternative stock watering points, Wetland plant establishment, Wetland plant management, Weed and pest animal management, Erosion control works, Educational activity support, Wetland management plans and Cultural Heritage surveys. For further information please contact the CWCMA water team in our Dubbo office on 6881 3400 or visit our site: [www.cw.cma.nsw.gov.au](http://www.cw.cma.nsw.gov.au)

## Central West CMA Cultural Heritage Incentives

The Cultural Heritage Incentive is to provide assistance to land managers to conserve, restore and manage the cultural resources on their land. Activities funded under the program can be negotiated on a site by site basis. Applications will be assessed on merit; however, preference will be given to on ground activities linked with other CMA incentives and/or programs. For further information or obtain applications please contact your local CMA office.

## Central West CMA Biodiversity Program

The CW CMA Biodiversity Incentive Program is designed to assist land managers to undertake works that will have selected biodiversity outcomes. To apply contact your nearest Central West CMA office and ask for a Biodiversity Incentive application form or download the application from [www.cw.cma.nsw.gov.au](http://www.cw.cma.nsw.gov.au) For further information please contact the Biodiversity team in Dubbo on 6881 3400.

## Central West CMA Native Vegetation Incentives

The Central West CMA Native Vegetation Incentive Program is designed to assist landholders manage and restore native vegetation for productive, ecologically healthy landscapes. The Vegetation Program is open all the time, EOI forms and fact sheets are available from your local CMA office or [www.cw.cma.nsw.gov.au](http://www.cw.cma.nsw.gov.au)

## Green Vouchers for Schools

Primary and secondary schools are eligible to redeem a Green Voucher for an amount up to \$50,000 for rainwater tanks, solar hot water systems or both. For more information go to: [www.environment.gov.au/greenvouchers](http://www.environment.gov.au/greenvouchers)

## NRMA Community help Grants Program

The Farm Help - Supporting Families through Change programme offers: financial assistance to farmers and their families who are experiencing financial difficulties and who cannot borrow further against their assets; tailored assistance to farm families to adjust and make decisions about their future in the industry; access to professional advice and training to assist farmers to consider their options for the future, to find alternative sources of income or to re-establish themselves outside of farming. For more info: [www.grantslink.gov.au](http://www.grantslink.gov.au) or phone 1800 050 585

## Dilmah Water Quality Funding

Grants of up to \$1,650 (inc GST) are up for grabs. Schools and community groups are able to apply for: water quality testing kits for community groups and schools. Water quality testing training Water quality testing kit consumables and additions. Closing dates are 30<sup>th</sup> May and October 31, 2008. For more info: [www.landcareonline.com/funding\\_opportunity\\_details.asp?fo\\_id=10](http://www.landcareonline.com/funding_opportunity_details.asp?fo_id=10)

## Junior Landcare Grants Program

Any school or organisation that would like to involve their students in landcare projects, in conjunction with local landcare groups, can apply for grants to assist them with the cost of their projects. Closing dates for 2008 are: Round 1: 2<sup>nd</sup> March, Round 2: 16<sup>th</sup> May, Round 3: 1<sup>st</sup> August, Round 4: 24<sup>th</sup> October. For more info please go to: [www.landcareonline.com/funding\\_opportunity\\_details.asp?fo\\_id=6](http://www.landcareonline.com/funding_opportunity_details.asp?fo_id=6)

## Australia Post Community Development Grants

Community groups, including local landcare groups across Australia, can now apply for yearly grants up to \$3,300 (inc GST) to help improve their local community and environment, through the Australia Post and Landcare Community Development Grants Program. For more information go to: [www.landcareonline.com/funding\\_opportunity\\_details.asp?fo\\_id=9](http://www.landcareonline.com/funding_opportunity_details.asp?fo_id=9)

Vibrant communities...healthy landscapes

## What's On ...in March and **Money Matters**

### **CENTRAL WEST CMA OFFICES**



**Wellington**

141 Percy St (PO Box 227)  
Ph: 6840 7800 Fax: 6840 7801

**Bathurst**

140 William St (PO Box 1480)  
Ph: 6339 4905 Fax: 6339 2949

**Dubbo**

Level 1, 211 Macquarie St (PO  
Box 2105)  
Ph: 6881 3400 Fax: 6881 3401

**Gilgandra**

23 Warren Rd (PO Box 181)  
Ph: 6847 2923 Fax: 6847 2997

**Mudgee**

90 Market St (PO Box 174)  
Ph: 6372 4044 Fax: 6372 6719

**Nyngan**

91B Pangee St (PO Box 121)  
Ph: 6832 1303 Fax: 6832 1031

**Orange**

39 William St (PO Box 1344)  
Ph: 63638600 Fax: 6363 8601

**Trangie**

Trangie Research Station (PO  
Box 181)  
Ph: 6880 8028 Fax: 6888 7201